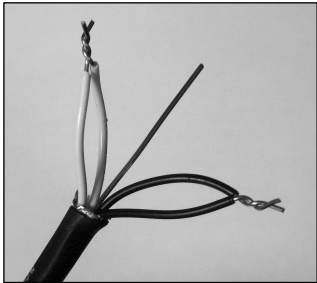


# LOW EMF DEVICES



## MuCord™ Breakthrough in Low EMF Wiring!!

At last, we are proud to offer wiring which actually reduces EMF emissions to extremely low levels. Patented design incorporates both of these EMF emission suppression features:

- special internal wire configuration to maximize cancellation of magnetic field emissions: 2 hot, 2 neutral, and one ground wire and
- shielded wrapping to completely

eliminate electric field emissions!

The result is electric wire with the lowest possible EMF emissions (over 90% reduction compared to standard wire). Replacing existing wire with MuCord is likely to be much less costly, more effective, and probably more convenient than shielding.



See How MuCord compares to standard ROMEX® carrying 30 Amps at 120V:

Distance cm	Standard ROMEX® Wire		Electric Field V/m	= MuCord™ =	
	Electric Field V/m	Magnetic Field mG		Electric Field V/m	Magnetic Field mG
5	346	95.8	0  (100% reduction)	7.68	(92% reduction)
10	300	24.0		0.96	(96% reduction)
20	240	6.0		0.12	(98% reduction)
40	155	1.5		0.014	(99+% reduction)
80	74	.37		0.0019	(99+% reduction)
100	65	.24		0.00096	(99+% reduction)
200	44	.06		0.00012	(99+% reduction)

ROMEX® is a trademark of the Southwire Company

Completely safe to use for indoor applications. Includes ground wire. Note: MuCord will not compensate for unbalanced current. Not UL rated for in-the-wall wiring applications.

**MuCord™** "Appliance cord style" for re-wiring lights and appliances, making extension cords, etc. 20AWG solid wire. Equivalent to 18/3 SVT, rated for 10 Amps, 300 Volts. ¼ inch outer diameter. Black. *Specify length.*

**MuCord (Cat. #D223) ..... \$1.75 per ft**



## Make Your Own Extension Cord or Appliance Cord

*Just Add Grounded Plugs and Sockets*



MuCord™ can be used to make extension cords, lamp and appliance cords. Simply cut wire to desired length and add a plug to one end, or plug one end and socket on the other. Easy to do with a screwdriver, simple instructions included. Rated for 15A – 125V.



These plugs are suitable for N. America. Plugs and sockets for other countries can be used, but you must obtain them locally.

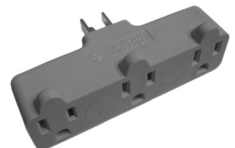
**NEMA 5-15P: 3 prong grounded plug (Cat#D224P) ..... \$2.25**

**NEMA 5-15R: 3 prong grounded socket (Cat #D224R) ..... \$3.25**

## 3 Outlet Socket Adapter

Need more room at the end of your cords? This sturdy adapter converts one outlet into 3. Uses standard North American 3-prong outlet. Handles up to 15A safely. Style may vary from photo.

**(Cat. #D804) ..... \$1.95**



Toll free in USA: 1-888-537-7363  
International: +1-518-432-1550